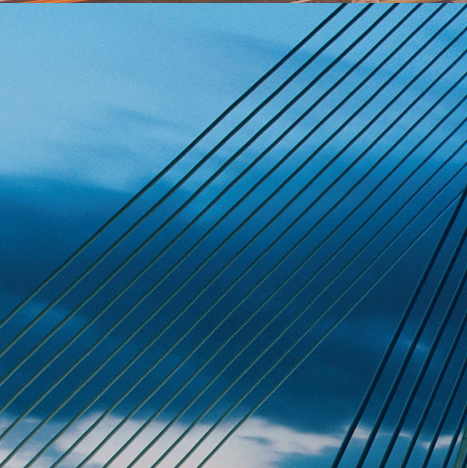
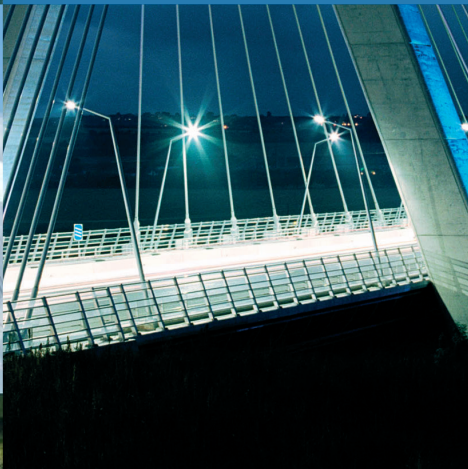


North-South 400kV Interconnection Development



Final Re-evaluation Report APPENDIX D

MSA Maps



Part Funded by the EU-TEN-E Initiative



APPENDIX D

MAPS RELATING TO THE MSA

- | | |
|----------------------|---|
| Map 1 (MSA) | Constraints within the Meath Study Area (MSA) |
| Map 2 (MSA) | Route Corridor Options for the MSA with the Ecological Constraints of the area |
| Map 3.1 (MSA) | Route Corridor Options for the CMSA with the Landscape Constraints of the area |
| Map 3.2 (MSA) | Corridor Options and Landscape Character Types Map |
| Map 3.3 (MSA) | Corridor Options and Landscape Character Areas Map |
| Map 4 (MSA) | Route Corridor Options for the MSA with the Geology Constraints of the area |
| Map 5 (MSA) | Route Corridor Options for the MSA with the Water Constraints of the area |
| Map 6 (MSA) | Route Corridor Options for the MSA with the Settlement Constraints and Population Densities of the area |
| Map 7 (MSA) | Route Corridor Options for the MSA with the Cultural Heritage Constraints of the area |
| Map 8 (MSA) | Route Corridor Options for the MSA with the Utilities and Infrastructure Constraints of the area |
| Map 9 (MSA) | Indicative Line Route (MSA) |

For constraints within this boundary please also refer to Map 1 (CMSA)



- Meath Study Area (MSA)
- Cavan Monaghan Study Area (CMSA)
- Urban Areas
- Railway Track
- Planned Navan Line (Disused Railway Track)
- Electricity Substation
- Windfarm
- 38 kV Line
- 110 kV Line
- 220 kV Line
- 400 kV Line
- East-West Interconnector
- Gas Station
- Gas Pipeline
- M3
- Airfield
- Landscape Conservation Area
- High Landscape Value Area
- Area of Special Landscape Interest
- Boyne Valley Sites
- Landmarks (Meath Landscape Character Assessment)
- Lakeside Amenity Area
- Area of Secondary Amenity Value
- Protected Views & Prospects (Meath County Development Plan 2013 - 2019)
- Boyne Valley Driving Route
- Driving Routes (Meath Landscape Character Assessment)
- Existing Paths and Cycle Routes (Meath Landscape Character Assessment)
- Proposed Paths and Cycle Routes (Meath Landscape Character Assessment)
- Previously known Whooper Swans
- Swan sites recorded in Winter Survey Period 1: 2007/08
- Swan sites recorded in Winter Survey Period 2: 2008/2009
- Swan sites recorded in Winter Survey Period 3: 2009/2010
- Swan sites recorded in Winter Survey Period 4: 2010/2011
- Swan sites recorded in Winter Survey Period 5: 2011/2012
- Forest Park
- Cavan County Development Plan 2008 - 2014
- Areas of Special Landscape Interest (Cavan County Development Plan 2008 - 2014)
- Natural Heritage Area/ Proposed Natural Heritage Area
- Candidate Special Area of Conservation
- Special Protection Area
- Sensitive Ecological Receptors
- Candidate World Heritage Sites
- National Monuments
- Potential National Monuments
- Preservation Orders
- National Inventory of Architectural Heritage
- RMP Sites
- Record of Protected Structures
- Architectural Conservation Areas
- Bru Na Boinne World Heritage Site
- Geological Interest Sites
- Geological Interest Site (identified by GSI)
- 100m limit marks
- Major Rivers
- Flight Lines 2007/08
- Flight Lines 2008/09
- Flight Lines 2009/10
- Flight Lines 2010/11
- Flight Lines 2011/12

Scale @ A3: 1:160,000

Issue	Date	Description	By	Chkd.
A	10.04.13	Issued	G.F.	M.H.

NOTES

- FIGURED DIMENSIONS ONLY TO BE TAKEN FROM THIS DRAWING
- DISCOVERY SERIES TILES USED: OS2628, OS2828, OS3028, OS2626, OS2826, OS3026, OS2624, OS2824, OS3024
- ALL LEVELS RELATE TO ORDNANCE SURVEY DATUM AT MALIN HEAD
- DESIGNATED CONSERVATION AREAS DATA SOURCED FROM NPWS
- WHOOPER SWANS DATA BASED ON SITE SURVEYS
- GEOLOGICAL DATA SOURCED FROM GSI
- RMP SITES, NATIONAL MONUMENTS AND PRESERVATION ORDERS SOURCED FROM THE DEPARTMENT OF ENVIRONMENT, HERITAGE AND LOCAL GOVERNMENT
- ARCHAEOLOGICAL CONSERVATION AREAS SOURCED FROM THE COUNTY COUNCILS
- LANDSCAPE DATA SOURCED FROM COUNTY DEVELOPMENT PLANS
- POPULATION DENSITY DATA SOURCED FROM CSO

Ordnance Survey Ireland Licence No EN 0016013 ©Ordnance Survey Ireland and Government of Ireland

Client:

Project: NORTH-SOUTH 400 kV INTERCONNECTION DEVELOPMENT
RE-EVALUATION REPORT

Title: CONSTRAINTS WITHIN THE MSA

Prepared by: G.Fil
Checked: M. Hogan
Date: April 2013

Project Director: Damien Grehan

Patrick J. Tobin & Co. Ltd.

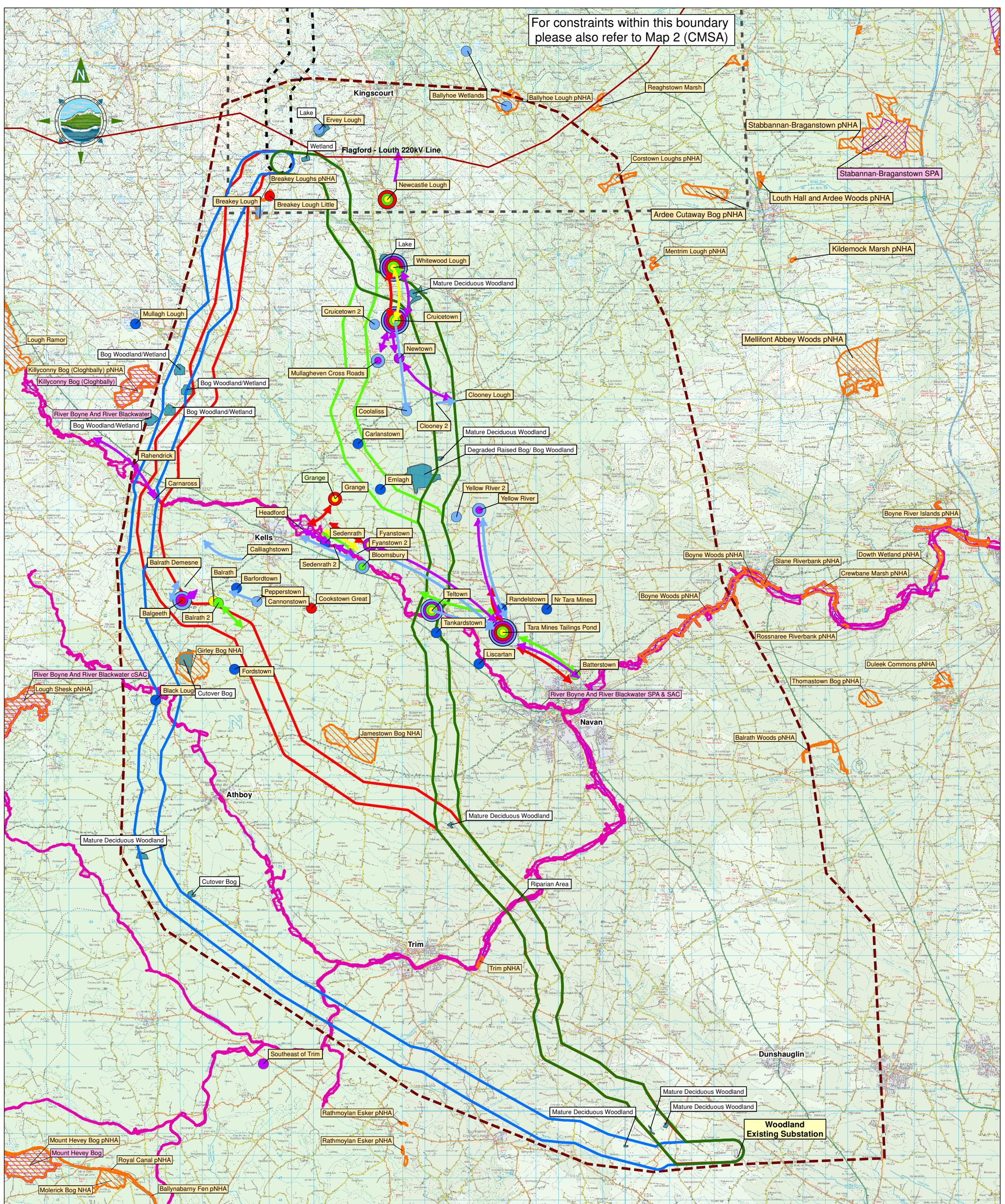
Consulting, Civil and Structural Engineers,
Block 10-4, Blanchardstown Corporate Park,
Dublin 15, Ireland

tel: +353 (0) 1-8030406
fax: +353 (0) 1-8030409
e-mail: info@tobin.ie
www.tobin.ie

No part of this document may be reproduced or transmitted in any form or stored in any retrieval system of any nature without the written permission of Patrick J. Tobin & Co. Ltd. All copyright holder except as agreed for use on the project for which the document was originally issued.

Map 1 (MSA) A

6244



Legend

- Meath Study Area (MSA)
- Cavan Monaghan Study Area (CMSA)
- Route Corridor Option 1
- Route Corridor Option 2
- Route Corridor Option 3A
- Route Corridor Option 3B
- Route Corridor Option A/B/C
- Natural Heritage Area/ Proposed Natural Heritage Area
- Candidate Special Area of Conservation
- Special Protection Area

Sensitive Ecological Receptors

- Swan sites recorded in Winter Survey Period 1: 2007/2008
- Swan sites recorded in Winter Survey Period 2: 2008/2009
- Swan sites recorded in Winter Survey Period 3: 2009/2010
- Swan sites recorded in Winter Survey Period 4: 2010/2011
- Swan sites recorded in Winter Survey Period 5: 2011/2012
- Historical Whooper Swan sites
- Flight Lines 2007/2008
- Flight Lines 2008/2009
- Flight Lines 2009/2010
- Flight Lines 2010/2011
- Flight Lines 2011/2012

Scale @ A3: 1:160,000

0 0.5 1 2 3 4 5
Kilometres

Issue	Date	Description	By	Chkd.
A	10-04-13	Issued	G.F.	M.H.

NOTES

1. FIGURED DIMENSIONS ONLY TO BE TAKEN FROM THIS DRAWING
2. DISCOVERY SERIES TILES USED: OS2628, OS2828, OS3028, OS2626, OS2826, OS3026, OS2624, OS2824, OS3024
3. ALL LEVELS RELATE TO ORDNANCE SURVEY DATUM AT MALIN HEAD
4. DESIGNATED CONSERVATION AREAS DATA SOURCED FROM NPWS
5. WHOOPER SWANS DATA BASED ON SITE SURVEYS

Client:

Project: NORTH-SOUTH 400 kV INTERCONNECTION DEVELOPMENT

RE-EVALUATION REPORT

Title: ROUTE CORRIDOR OPTIONS FOR THE MSA WITH THE ECOLOGICAL CONSTRAINTS OF THE AREA

Prepared by: G.Fil
Checked: M. Hogan
Date: April 2013

Project Director: Damien Grehan

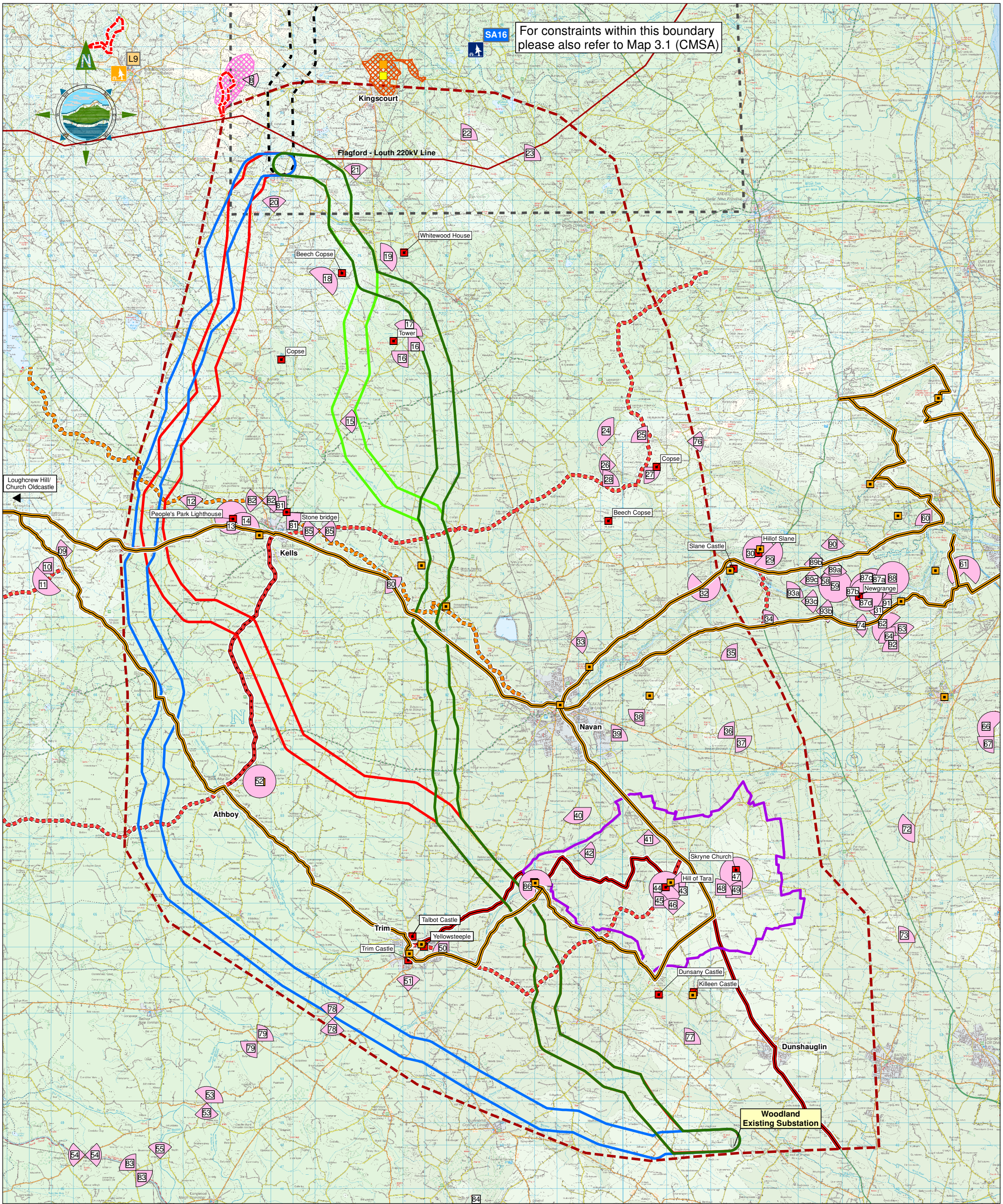
TOBIN
Patrick J. Tobin & Co. Ltd.

Consulting, Civil and Structural Engineers,
Block 10-4, Blanchardstown Corporate Park,
Dublin 15, Ireland

tel: +353 (0)1-8030406
fax: +353 (0)1-8030409
e-mail: info@tobin.ie
www.tobin.ie

No part of this document may be reproduced or transmitted in any form or stored in any retrieval system of any nature without the written permission of Patrick J. Tobin & Co. Ltd. as copyright holder except as agreed for use on the project for which the document was originally issued.

Map 2 (MSA) **A**



- Legend**
- Meath Study Area (MSA)
 - Cavan Monaghan Study Area (CMSA)
 - Route Corridor Option 1
 - Route Corridor Option 2
 - Route Corridor Option 3A
 - Route Corridor Option 3B
 - Route Corridor Option A/B/C
 - Area of Secondary Amenity Value
 - Lakeside Amenity Area

- Boyne Valley Sites
- Landmarks (Meath Landscape Character Assessment)
- Forest Park (Cavan County Development Plan 2008 - 2014)
- Areas of Special Landscape Interest (Cavan County Development Plan 2008 - 2014)
- Protected Views & Prospects (Meath County Development Plan 2013 - 2019)
- Landscape Conservation Area
- Driving Routes (Meath Landscape Character Assessment)
- Boyne Valley Driving Route
- Existing Paths and Cycle Routes (Meath Landscape Character Assessment)
- Proposed Paths and Cycle Routes (Meath Landscape Character Assessment)
- High Landscape Value Area
- Area of Special Landscape Interest

Scale @ A3: 1:160,000

Issue	Date	Description	By	Chkd.
A	10-04-13	Issued	G.F.	M.H.

NOTES

- FIGURED DIMENSIONS ONLY TO BE TAKEN FROM THIS DRAWING
- DISCOVERY SERIES TILES USED: OS2628, OS2628, OS3028, OS2626, OS2826, OS3026, OS2624, OS2824, OS3024
- ALL LEVELS RELATE TO ORDNANCE SURVEY DATUM AT MALIN HEAD
- LANDSCAPE DATA SOURCED FROM COUNTY DEVELOPMENT PLANS

Client:

Project: NORTH-SOUTH 400 kV INTERCONNECTION DEVELOPMENT
RE-EVALUATION REPORT

Title: ROUTE CORRIDOR OPTIONS FOR THE MSA WITH THE LANDSCAPE CONSTRAINTS OF THE AREA

Prepared by: G. Fil
Checked: M. Hogan
Date: April 2013

Project Director: Damien Grehan

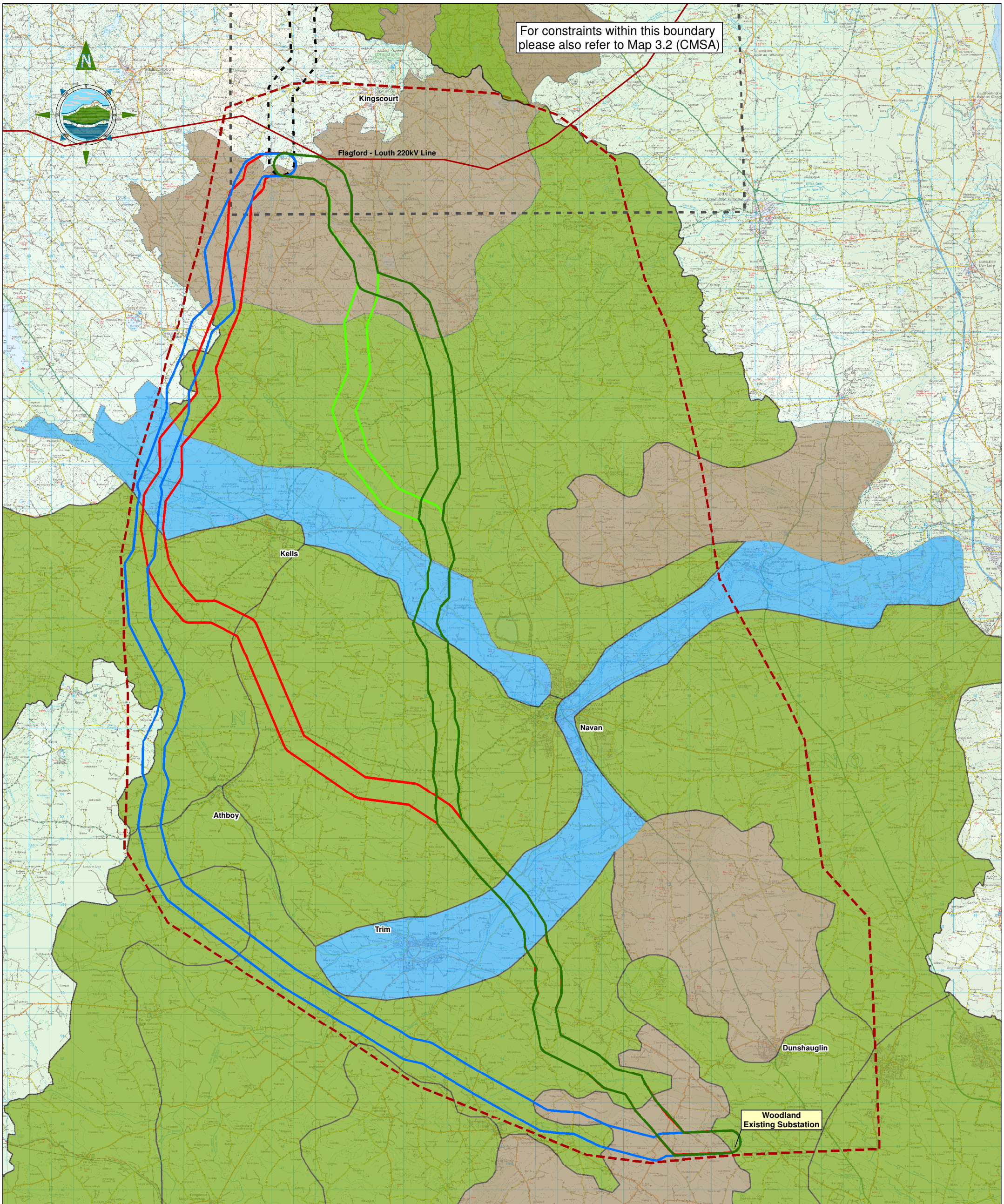
Patrick J. Tobin & Co. Ltd.

Consulting, Civil and Structural Engineers,
Block 10-4, Blanchardstown Corporate Park,
Dublin 15, Ireland

tel: +353-(0)1-8030406
fax: +353-(0)1-8030409
e-mail: info@tobin.ie
www.tobin.ie

No part of this document may be reproduced or transmitted in any form or stored in any retrieval system of any nature without the written permission of Patrick J. Tobin & Co. Ltd. as copyright holder except as agreed for use on the project for which the document was originally issued.

Map 3.1 (MSA) **A**



Legend

- Meath Study Area (MSA)
- Cavan Monaghan Study Area (CMSA)
- Route Corridor Option 1
- Route Corridor Option 2
- Route Corridor Option 3A
- Route Corridor Option 3B
- Route Corridor Option A/B/C

Landscape Character Type

- Hills and Upland Areas
- Lowland Landscapes
- River Corridors and Estuaries

Scale @ A3: 1:160,000



Issue	Date	Description	By	Chkd.
A	10/04/13	Issued	G.F.	M.H.

- NOTES**
- FIGURED DIMENSIONS ONLY TO BE TAKEN FROM THIS DRAWING
 - DISCOVERY SERIES TILES USED: OS2628, OS2628, OS3028, OS2626, OS2826, OS3026, OS2624, OS2824, OS3024
 - ALL LEVELS RELATE TO ORDNANCE SURVEY DATUM AT MALIN HEAD
 - LANDSCAPE DATA SOURCED FROM COUNTY DEVELOPMENT PLANS

Client:



Project:

NORTH-SOUTH 400 kV
INTERCONNECTION DEVELOPMENT
RE-EVALUATION REPORT

Title:

CORRIDOR OPTIONS & LANDSCAPE
CHARACTER
TYPES MAP

Prepared by: G.Fil
Checked: M. Hogan
Date: April 2013

Project Director: Damien Grehan



Consulting, Civil and Structural Engineers,
Block 10-4, Blanchardstown Corporate Park,
Dublin 15, Ireland

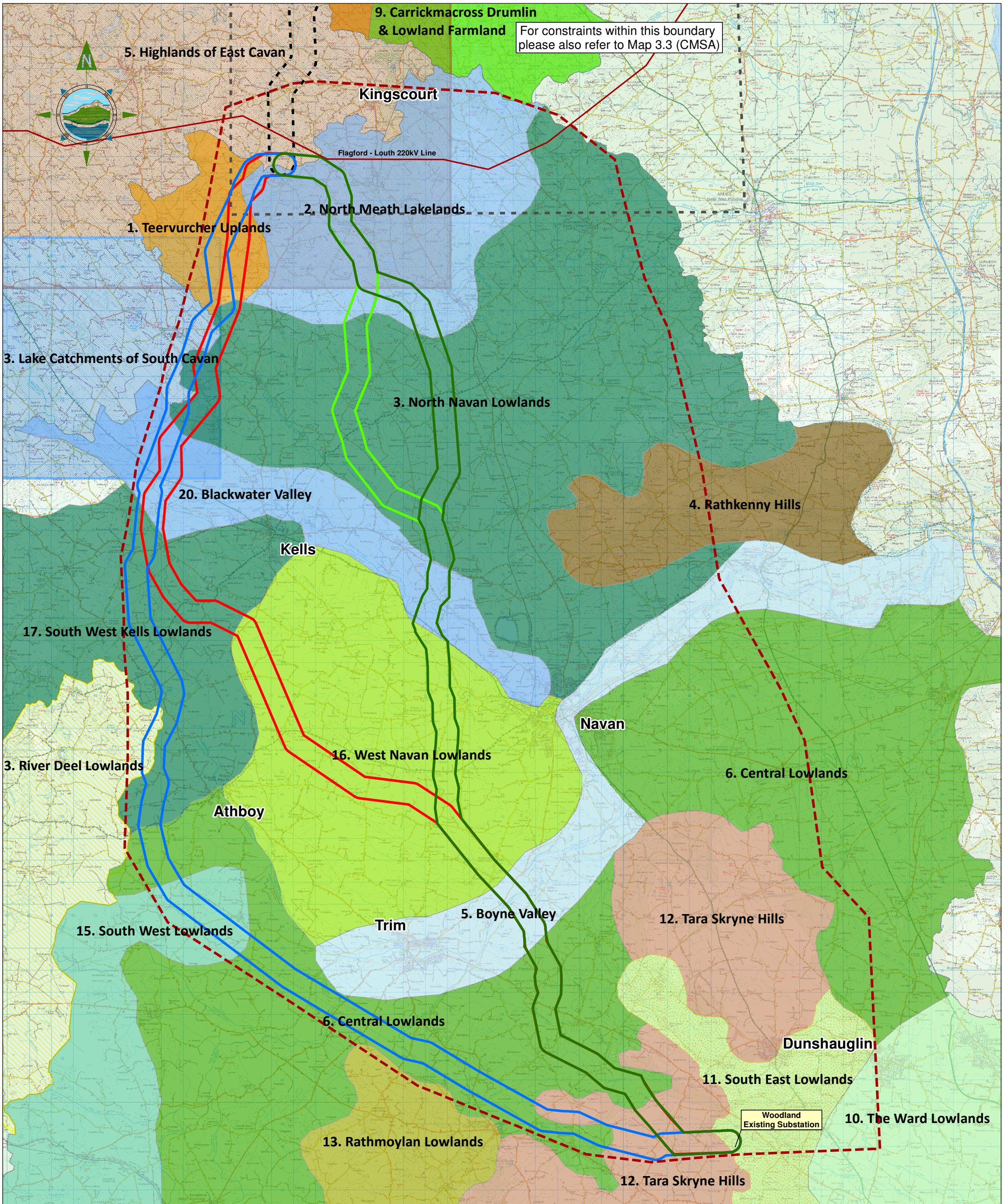
tel: +353 (0)1-8030406
fax: +353 (0)1-8030409
e-mail: info@tobin.ie
www.tobin.ie

No part of this document may be reproduced or transmitted in any form or stored in any retrieval system without the written permission of Patrick J. Tobin & Co. Ltd. as copyright holder except as agreed for use on the project for which the document was originally issued.

Map 3.2 (MSA)

6244

A



- Legend**
- Meath Study Area (MSA)
 - Cavan Monaghan Study Area (CMSA)
 - Route Corridor Option 1
 - Route Corridor Option 2
 - Route Corridor Option 3A
 - Route Corridor Option 3B
 - Route Corridor Option A/B/C

- | | |
|---|--|
| <p>County Meath Landscape Character Areas</p> <ul style="list-style-type: none"> 1. Teervurcher Uplands 2. North Meath Lakelands 3. North Navan Lowlands 4. Rathkenny Hills 5. Boyne Valley 6. Central Lowlands 9. Carrickmacross Drumlin & Lowland Farmland 10. The Ward Lowlands 11. South East Lowlands 12. Tara Skryne Hills 13. Rathmoylan Lowlands 15. South West Lowlands 16. West Navan Lowlands 17. South West Kells Lowlands 20. Blackwater Valley | <p>County West Meath Landscape Character Areas</p> <ul style="list-style-type: none"> 3. River Deel Lowlands <p>County Cavan Landscape Character Areas</p> <ul style="list-style-type: none"> 3. Lake Catchments of South Cavan 5. Highlands of East Cavan |
|---|--|

Scale @ A3: 1:160,000

A	10/04/13	Issued	G.F.	M.H.
Issue	Date	Description	By	Chkd.

NOTES

1. FIGURED DIMENSIONS ONLY TO BE TAKEN FROM THIS DRAWING
2. DISCOVERY SERIES TILES USED: OS2628, OS2628, OS3028, OS2626, OS2826, OS3026, OS2624, OS2824, OS3024
3. ALL LEVELS RELATE TO ORDNANCE SURVEY DATUM AT MALIN HEAD
4. LANDSCAPE DATA SOURCED FROM COUNTY DEVELOPMENT PLANS

Client:

Project: NORTH-SOUTH 400 kV INTERCONNECTION DEVELOPMENT
RE-EVALUATION REPORT

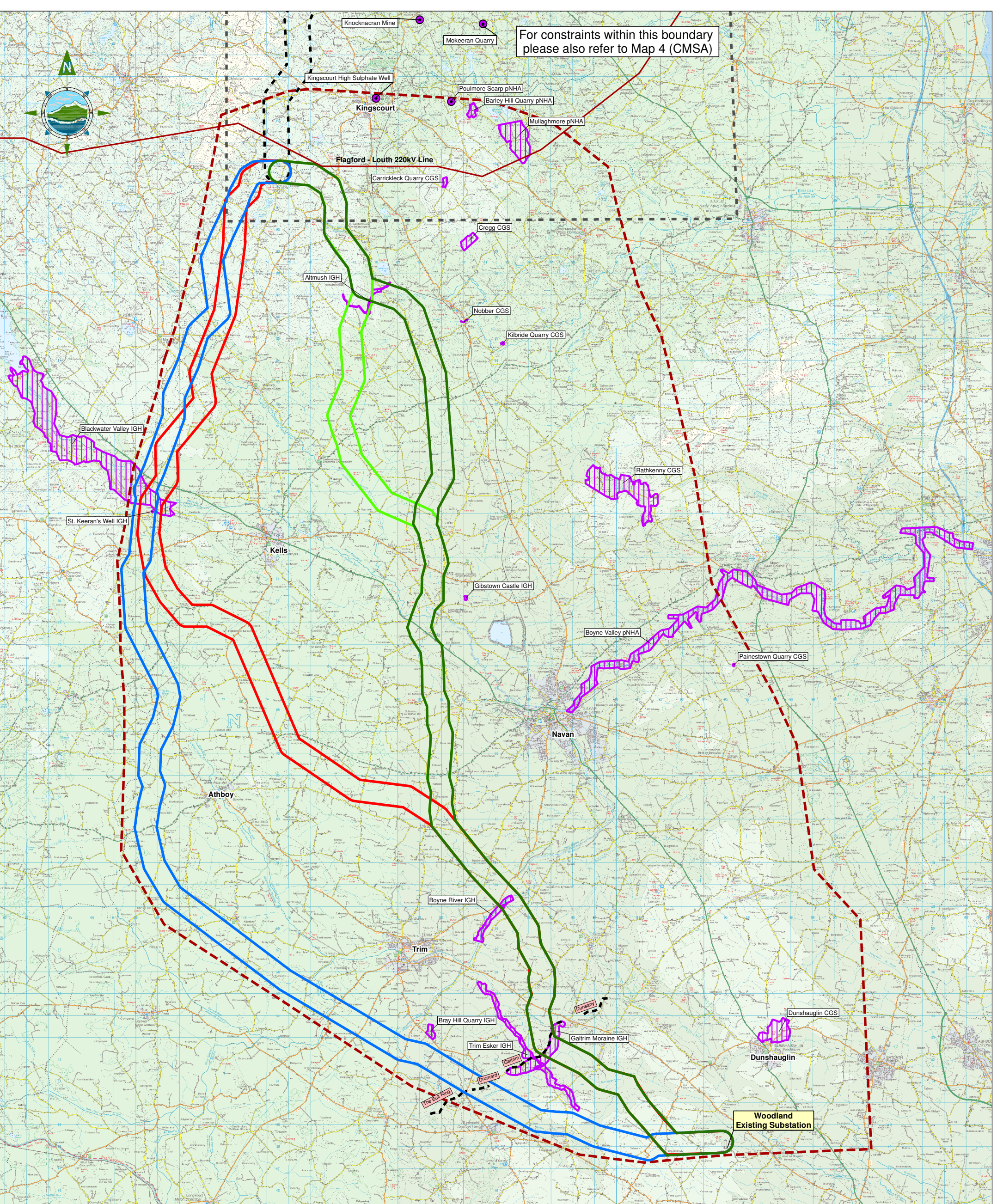
Title: CORRIDOR OPTIONS & LANDSCAPE CHARACTER AREAS MAP

Prepared by: G.Fil	Checked: M. Hogan	Date: April 2013
Project Director: Damien Grehan		

Consulting, Civil and Structural Engineers,
Block 10-4, Blanchardstown Corporate Park,
Dublin 15, Ireland

tel: +353-(0)1-8030406
fax: +353-(0)1-8030409
e-mail: info@tobin.ie
www.tobin.ie

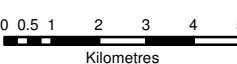
No part of this document may be reproduced or transmitted in any form or by any means without the written permission of Patrick J. Tobin & Co. Ltd. as copyright holder except as agreed for use on the project for which the document was originally issued.



Legend

- Meath Study Area (MSA)
- Cavan Monaghan Study Area (CMSA)
- Route Corridor Option 1
- Route Corridor Option 2
- Route Corridor Option 3A
- Route Corridor Option 3B
- Route Corridor Option A/B/C
- Geological Interest Site (identified by GSI)
- Ice limit marks
- Geological Interest Sites

Scale @ A3: 1:160,000



Issue	Date	Description	By	Chkd.
A	10-04-13	Issued	G.F.	M.H.

NOTES
 1. FIGURED DIMENSIONS ONLY TO BE TAKEN FROM THIS DRAWING
 2. DISCOVERY SERIES TILES USED: OS2628, OS2828, OS3028, OS2626, OS2826, OS3026, OS2624, OS2824, OS3024
 3. ALL LEVELS RELATE TO ORDNANCE SURVEY DATUM AT MALIN HEAD
 4. GEOLOGICAL DATA SOURCED FROM GSI

Client:

Project: **NORTH-SOUTH 400 kV INTERCONNECTION DEVELOPMENT**

RE-EVALUATION REPORT

Title: **ROUTE CORRIDOR OPTIONS FOR THE MSA WITH THE GEOLOGY CONSTRAINTS OF THE AREA**

Prepared by: G. Fil
 Checked: M. Hogan
 Date: April 2013

Project Director: Damien Grehan

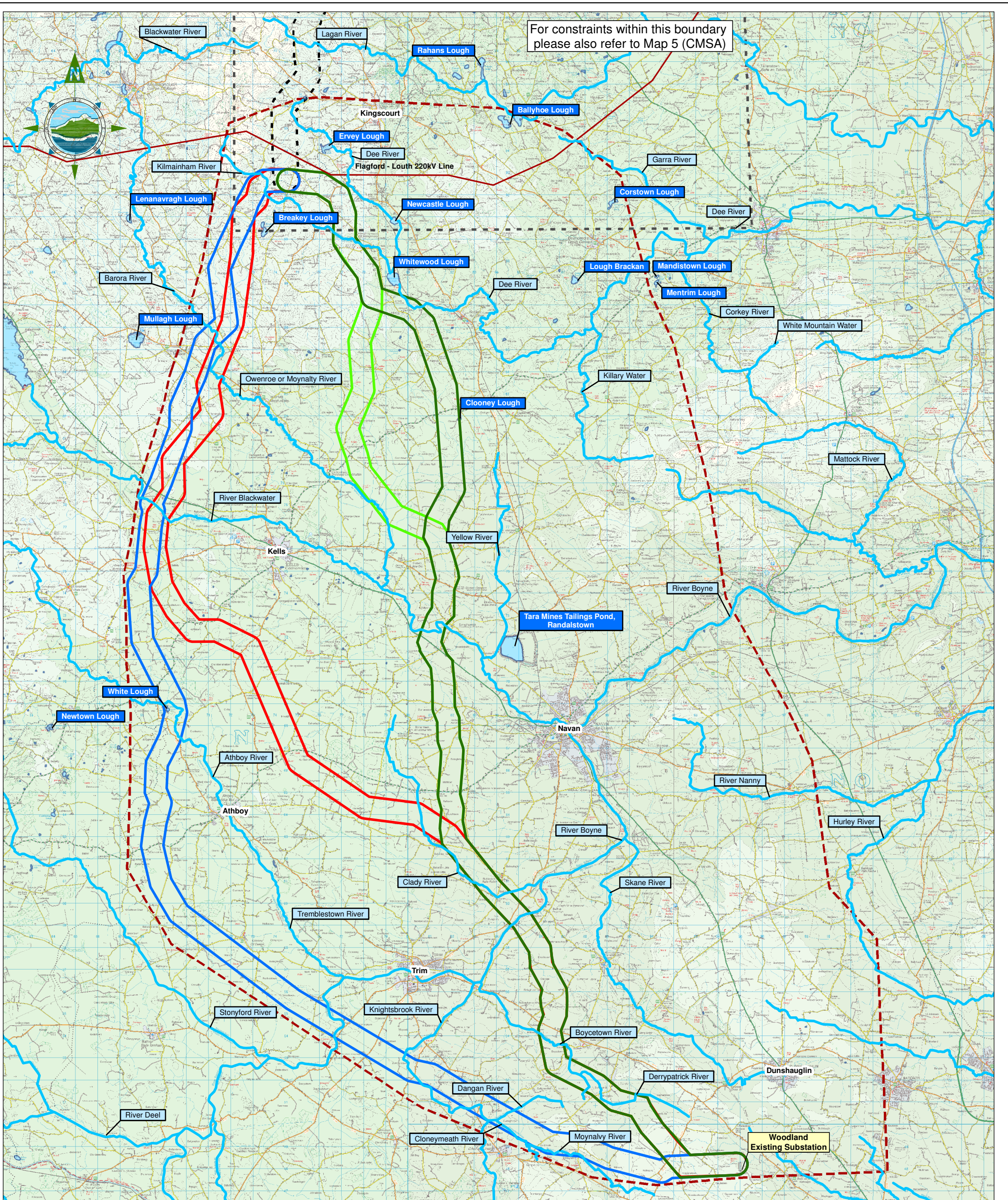
TOBIN
 Patrick J. Tobin & Co. Ltd.

Consulting, Civil and Structural Engineers,
 Block 10-4, Blanchardstown Corporate Park,
 Dublin 15, Ireland

tel: +353 (0)1-8030406
 fax: +353 (0)1-8030409
 e-mail: info@tobin.ie
 www.tobin.ie

No part of this document may be reproduced or transmitted in any form or stored in any retrieval system of any nature without the written permission of Patrick J. Tobin & Co. Ltd. as copyright holder except as agreed for use on the project for which the document was originally issued.

Map 4 (MSA) A



Legend

- Meath Study Area (MSA)
- Cavan Monaghan Study Area (CMSA)
- Route Corridor Option 1
- Route Corridor Option 2
- Route Corridor Option 3A
- Route Corridor Option 3B
- Route Corridor Option A/B/C
- Major Rivers
- Major Lakes
- River Boyne Major River in Proximity to Study Area
- White Lough Lake in Proximity to Study Area

Scale @ A3: 1:160,000

Issue	Date	Description	By	Chkd
A	10/04/13	Issued	G.F.	M.H.

NOTES

- FIGURED DIMENSIONS ONLY TO BE TAKEN FROM THIS DRAWING
- DISCOVERY SERIES TILES USED: OS2628, OS2628, OS3028, OS2626, OS2626, OS3026, OS2624, OS2624, OS3024
- ALL LEVELS RELATE TO ORDNANCE SURVEY DATUM AT MALIN HEAD

Client:

Project:
NORTH-SOUTH 400 kV
INTERCONNECTION DEVELOPMENT
RE-EVALUATION REPORT

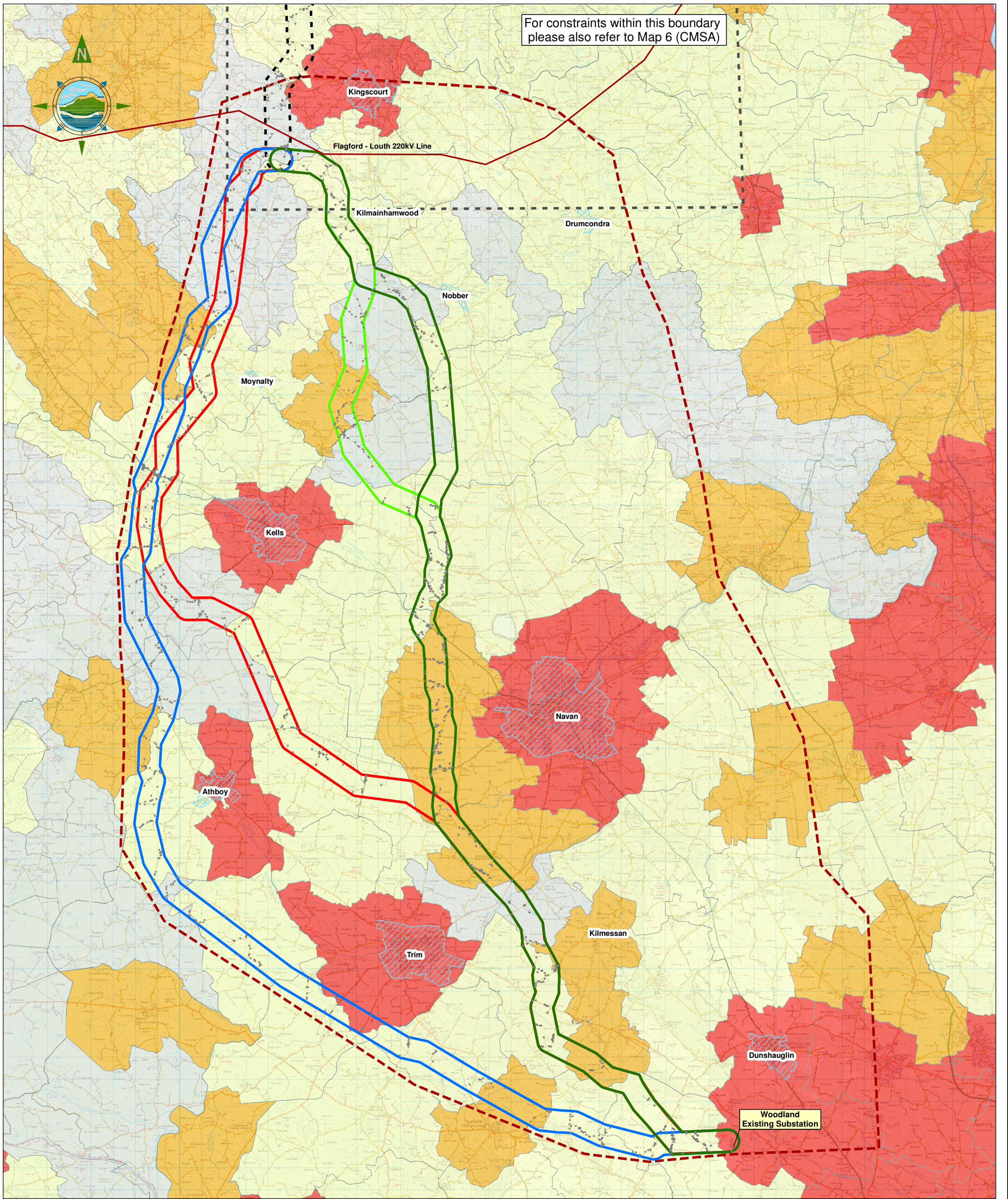
Title:
ROUTE CORRIDOR OPTIONS
FOR THE MSA WITH THE
WATER CONSTRAINTS
OF THE AREA

Prepared by: G.Fil
Checked: M. Hogan
Date: April 2013

Project Director: Damien Grehan

Patrick J. Tobin & Co. Ltd.
Consulting, Civil and Structural Engineers,
Block 10-4, Blanchardstown Corporate Park,
Dublin 15, Ireland.
Tel: +353 (0)1-8030406
Fax: +353 (0)1-8030409
e-mail: info@tobin.ie
www.tobin.ie

No part of this document may be reproduced or transmitted in any form or stored in any retrieval system of any nature without the written permission of Patrick J. Tobin & Co. Ltd. All copyright holder except as agreed for use on the project for which the document was originally issued.



Legend

- Meath Study Area (MSA)
- Cavan Monaghan Study Area (CMSA)
- Route Corridor Option 1
- Route Corridor Option 2
- Route Corridor Option 3A
- Route Corridor Option 3B
- Route Corridor Option A/B/C
- GeoDirectory (December 2012)
- Urban Areas

Persons per square kilometre

- 10 < 25
- 25 < 50
- 50 < 100
- 100+

(as shown in Figure 2, Population density of Electoral Divisions, 2011, CSO)

Scale @ A3: 1:160,000

Issue	Date	Description	By	Chkd.
A	10-04-13	Issued	G.F.	M.H.

NOTES

- FIGURED DIMENSIONS ONLY TO BE TAKEN FROM THIS DRAWING
- DISCOVERY SERIES TILES USED: OS2828, OS2828, OS3028, OS2826, OS2826, OS3026, OS2824, OS2824, OS3024
- ALL LEVELS RELATE TO ORDNANCE SURVEY DATUM AT MALIN HEAD
- POPULATION DENSITY SOURCED FROM CSO

Client:

Project: NORTH-SOUTH 400 kV INTERCONNECTION DEVELOPMENT

RE-EVALUATION REPORT

Title: ROUTE CORRIDOR OPTIONS FOR THE MSA WITH THE SETTLEMENT CONSTRAINTS AND POPULATION DENSITIES OF THE AREA

Prepared by: G. Fil
Checked: M. Hogan
Date: April 2013

Project Director: Damien Grehan

Patrick J. Tobin & Co. Ltd.

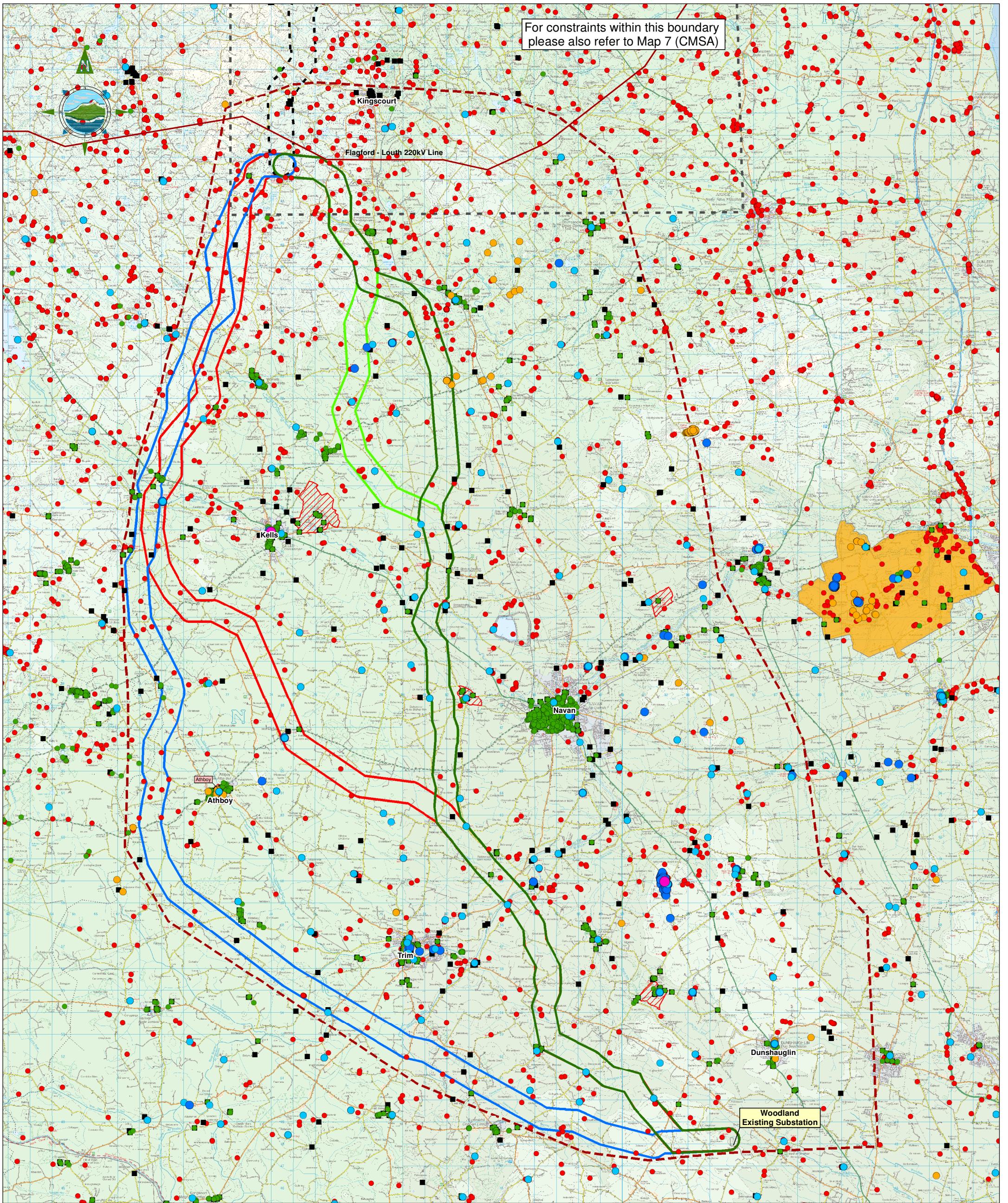
Consulting, Civil and Structural Engineers,
Block 10-4, Blanchardstown Corporate Park,
Dublin 15, Ireland

tel: +353 (0)1 8030406
fax: +353 (0)1 8030409
e-mail: info@tobin.ie
www.tobin.ie

No part of this document may be reproduced or transmitted in any form or stored in any retrieval system of any nature without the written permission of Patrick J. Tobin & Co. Ltd. An copyright notice is agreed for use on the project for which the document was originally issued.

Map 6 (MSA) 6244
A

For constraints within this boundary please also refer to Map 7 (CMSA)



Legend

- Meath Study Area (MSA)
- Cavan Monaghan Study Area (CMSA)
- Route Corridor Option 1
- Route Corridor Option 2
- Route Corridor Option 3A
- Route Corridor Option 3B
- Route Corridor Option A/B/C
- Candidate World Heritage Sites
- National Monuments
- Potential National Monuments
- Preservation Orders
- National Inventory of Architectural Heritage
- RMP Sites
- Record of Protected Structures
- Architectural Conservation Areas
- Bru Na Boinne World Heritage Site

Scale @ A3: **1:160,000**

0 0.5 1 2 3 4 5
Kilometres

Issue	Date	Description	By	Chkd.
A	10/04/13	Issued	G.F.	M.H.

NOTES

1. FIGURED DIMENSIONS ONLY TO BE TAKEN FROM THIS DRAWING
2. DISCOVERY SERIES TILES USED: OS2628, OS2828, OS3028, OS2626, OS2826, OS3026, OS2624, OS2824, OS3024
3. ALL LEVELS RELATE TO ORDNANCE SURVEY DATUM AT MALIN HEAD
4. RMP SITES, NATIONAL MONUMENTS AND PRESERVATION ORDERS SOURCED FROM THE DEPARTMENT OF ENVIRONMENT, HERITAGE AND LOCAL GOVERNMENT
5. ARCHAEOLOGICAL CONSERVATION AREAS SOURCED FROM THE COUNTY COUNCILS

Client:

Project: **NORTH-SOUTH 400 kV INTERCONNECTION DEVELOPMENT**

RE-EVALUATION REPORT

Title: **ROUTE CORRIDOR OPTIONS FOR THE MSA WITH THE CULTURAL HERITAGE CONSTRAINTS OF THE AREA**

Prepared by: G. Fil
Checked: M. Hogan
Date: April 2013

Project Director: Damien Grehan

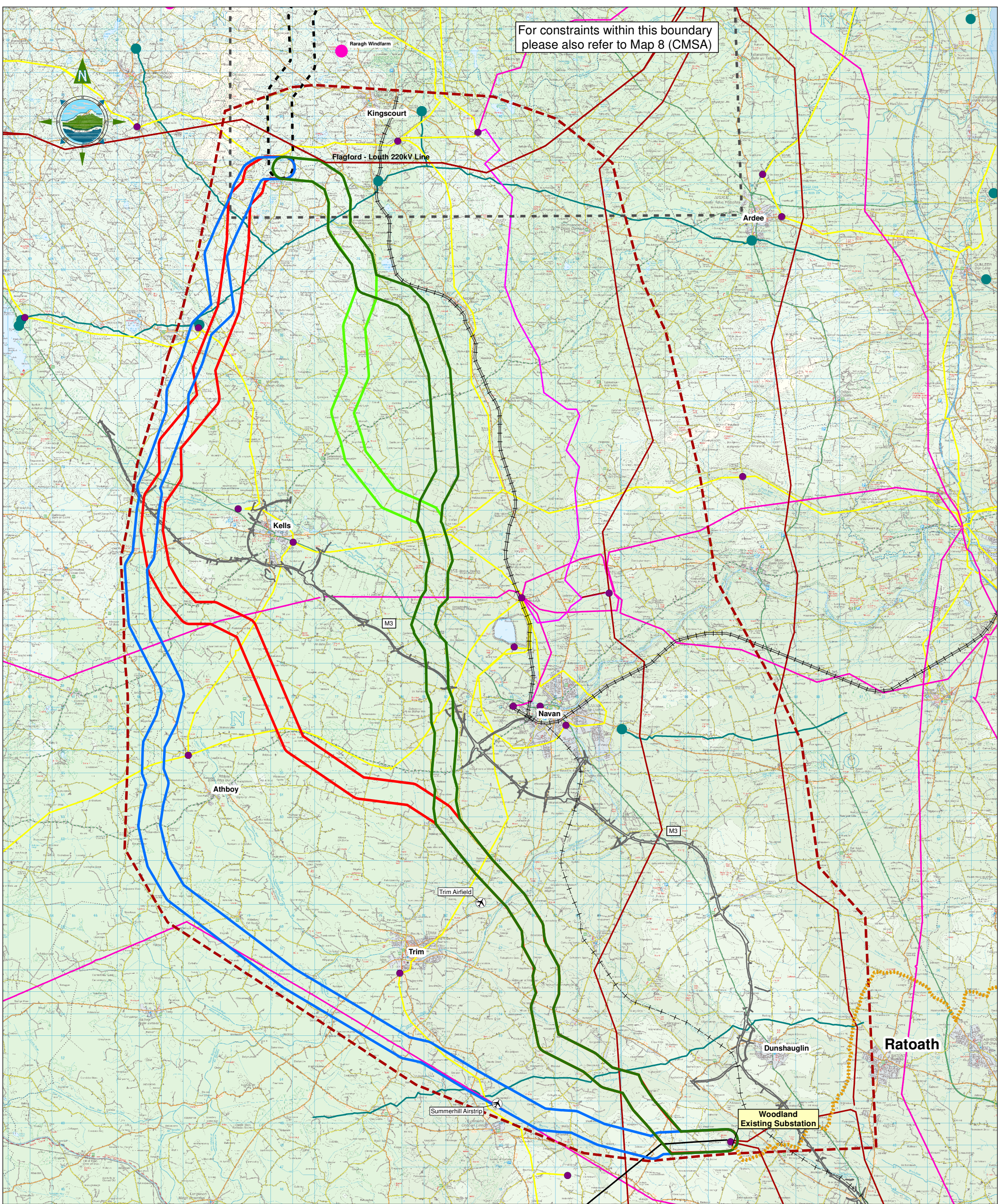
Patrick J. Tobin & Co. Ltd.

Consulting, Civil and Structural Engineers,
Block 10-4, Blanchardstown Corporate Park,
Dublin 15, Ireland

tel: +353 (0)1-8030406
fax: +353 (0)1-8030409
e-mail: info@tobin.ie
www.tobin.ie

No part of this document may be reproduced or transmitted in any form or stored in any retrieval system of any nature without the written permission of Patrick J. Tobin & Co. Ltd. its copyright holder except as agreed for use on the project for which the document was originally issued.

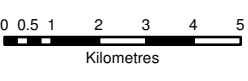
Map 7 (MSA) 6244
A



Legend

- Meath Study Area (MSA)
- Cavan Monaghan Study Area (CMSA)
- Route Corridor Option 1
- Route Corridor Option 2
- Route Corridor Option 3A
- Route Corridor Option 3B
- Route Corridor Option A/B/C
- Planned Navan Line (Disused Railway Track)
- Railway Track
- Electricity Substation
- East-West Interconnector
- 38 kV Line
- 110 kV Line
- 220 kV Line
- 400 kV Line
- Gas Station
- Gas Pipeline
- M3
- Airfield
- Windfarm

Scale @ A3: 1:160,000



Issue	Date	Description	By	Chkd.
A	10-04-13	Issued	G.F	M.H.

- NOTES**
1. FIGURED DIMENSIONS ONLY TO BE TAKEN FROM THIS DRAWING
 2. DISCOVERY SERIES TILES USED: OS2628, OS2828, OS3028, OS2626, OS2826, OS3026, OS2624, OS2824, OS3024
 3. ALL LEVELS RELATE TO ORDNANCE SURVEY DATUM AT MALIN HEAD
 4. AIR FIELDS DATA BASED ON SURVEYS
 5. GAS NETWORK SOURCED FROM BORD GÁS ÉIREANN
 6. POWER NETWORK SOURCED FROM ESB NETWORKS
 7. M3 SOURCED FROM NRA

Client:

Project: NORTH-SOUTH 400 kV INTERCONNECTION DEVELOPMENT

RE-EVALUATION REPORT

Title: ROUTE CORRIDOR OPTIONS FOR THE MSA WITH THE UTILITIES AND INFRASTRUCTURE CONSTRAINTS OF THE AREA

Prepared by: G. Fil
Checked: M. Hogan
Date: April 2013

Project Director: Damien Grehan

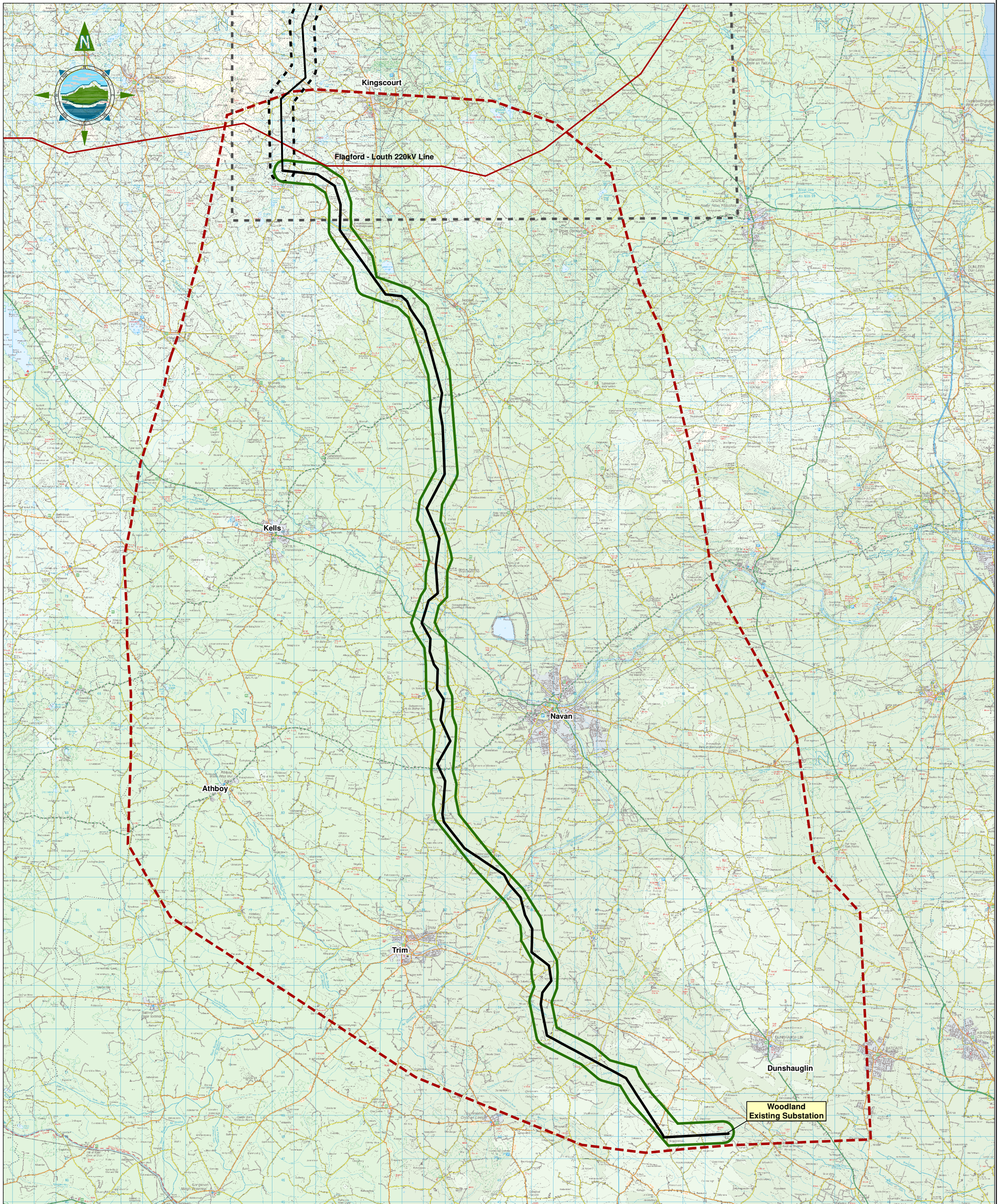
Patrick J. Tobin & Co. Ltd.

Consulting, Civil and Structural Engineers,
Block 10-4, Blanchardstown Corporate Park,
Dublin 15, Ireland

tel: +353 (0)1-8030406
fax: +353 (0)1-8030409
e-mail: info@tobin.ie
www.tobin.ie

No part of this document may be reproduced or transmitted in any form or stored in any retrieval system of any nature without the written permission of Patrick J. Tobin & Co. Ltd. its copyright holder except as agreed for use on the project for which the document was originally issued.

Map 8 (MSA) **A**



- Legend**
- Meath Study Area (MSA)
 - Cavan Monaghan Study Area (CMSA)
 - Route Corridor Option 3B
 - Route Corridor Option A
 - Indicative Line Route (April 2013)

Scale @ A3: 1:160,000

Issue	Date	Description	By	Chkd.
A	10-04-13	Issued	G.F.	M.H.

- NOTES**
1. FIGURED DIMENSIONS ONLY TO BE TAKEN FROM THIS DRAWING
 2. DISCOVERY SERIES TILES USED: OS2626, OS2628, OS3028, OS2626, OS2626, OS3026, OS2624, OS2624, OS3024
 3. ALL LEVELS RELATE TO ORDNANCE SURVEY DATUM AT MALIN HEAD
 4. DESIGNATED CONSERVATION AREAS DATA SOURCED FROM NPWS
 5. WHOPPER SWANS DATA BASED ON SITE SURVEYS

Client:

Project: **NORTH-SOUTH 400 kV INTERCONNECTION DEVELOPMENT**

RE-EVALUATION REPORT

Title: **INDICATIVE LINE ROUTE (MSA)**

Prepared by: G.Fil
Checked: M. Hogan
Date: April 2013

Project Director: Damien Grehan

TOBIN
Patrick J. Tobin & Co. Ltd.

Consulting, Civil and Structural Engineers,
Block 10-4, Blanchardstown Corporate Park,
Dublin 15, Ireland

tel: +353-(0)1-8030406
fax: +353-(0)1-8030409
e-mail: info@tobin.ie
www.tobin.ie

No part of this document may be reproduced or transmitted in any form or stored in any retrieval system of any nature without the written permission of Patrick J. Tobin & Co. Ltd. as copyright holder except as agreed for use on the project for which the document was originally issued.

Map 9 (MSA) **A**